

Paul
30 Oct 84
16:35

37° 15' 54" N
105° 19' 11" W.

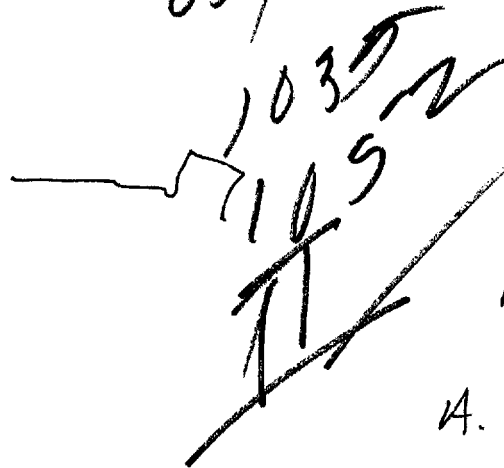


A. up and down

ADH Break
Volcano

003
051

37° 15' 54" N.
105° 19' 11" W.



A. air & fluid
B. water

A. angle
solid

B. building



Confusion break

37° 15' 54" N.
105° 19' 11" W



A. Confusion
break

Sand dunes

37° 15' 54" N.

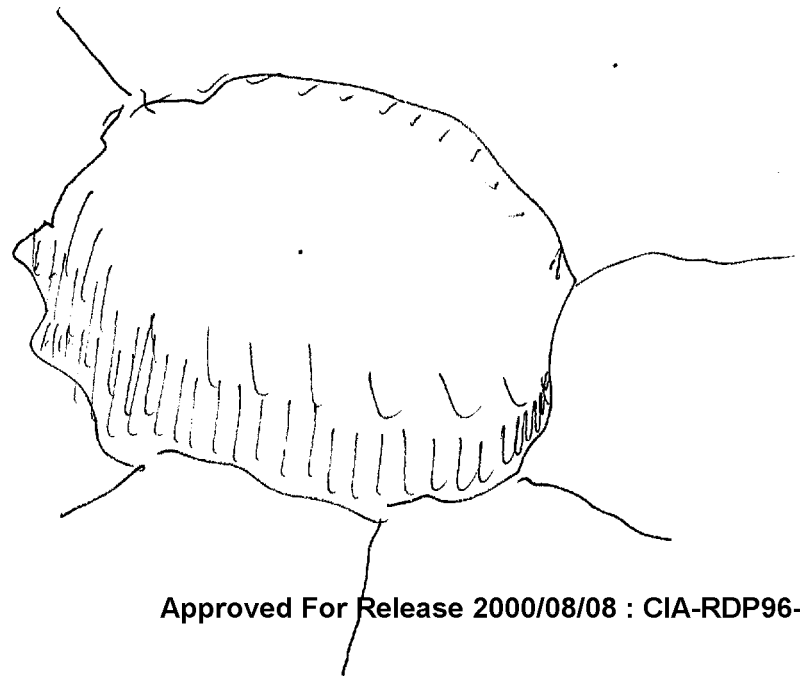
105° 19' 11" W.



S-2

A. ground pe
solid c
B. land c

Very brown pe
slightly mounded c
bordered c
irregular pe
clay pe c
~~sp~~ smooth c
water c
green c
dark color c
undulating terrain c
winding channels c
rocks ~~pe~~ c
cold c
lack of vegetation c
open c
wide expanse
flat
AS barren feeling



37° 15' 54" N.

105° 19' 11" W



S-2

projecting pe
raised c
flat c
rounded pe
bluff of pe
light color c

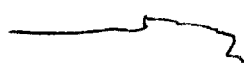
A. curving land
solid

B. -

ALL Break
glacier

37° 15' 54" N.

105° 19' 11" W.



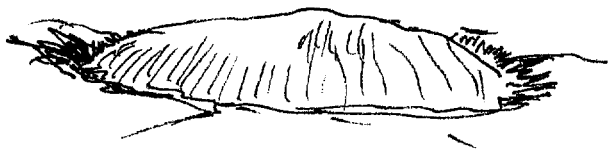
S-2

ribbing pe
flat c
white c
regular pe
gravelly c

A. across -
hard c

B. -

ALL Break
Tiptield



37° 15' 54" N.
105° 19' 11" W



S-2
blade rrc
angular rrc

A. across
plate
B. land c

A. curving back
S-LTD
B.-

ADL Break
coal outcropping

37° 15' 54" N.

105° 19' 11" W

A. cross up
hard c

B.

S-2

Adl Break
mesa
Indian Ruins

37° 15' 54" N.

105° 19' 11" W.

A. cross up
solid

B.

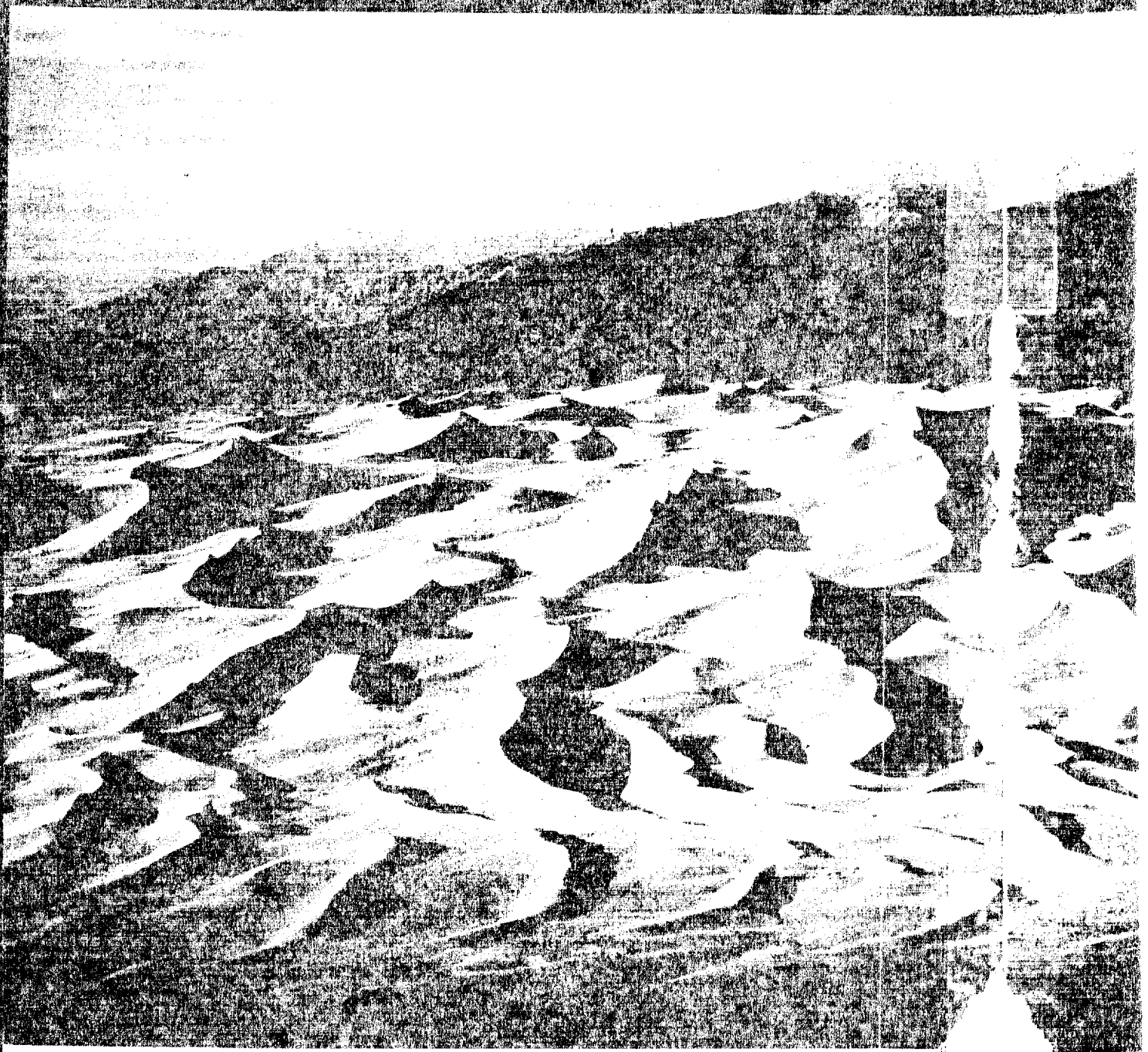
S-2

grey c
concrete
flat c
pebbly c
red c
pink c
orange pe
wind rounded pe
dry c
sandy c
whitish pe
granular surface
sandstone
molated c

H/O Break
Sandstone formation

end

Sandstone formation



Worthy companion to the Sangre de Cristo Mountains, Great Sand Dunes National Monument evokes its own ever changing majesty as it blankets an area

*of 50 square
miles as has*

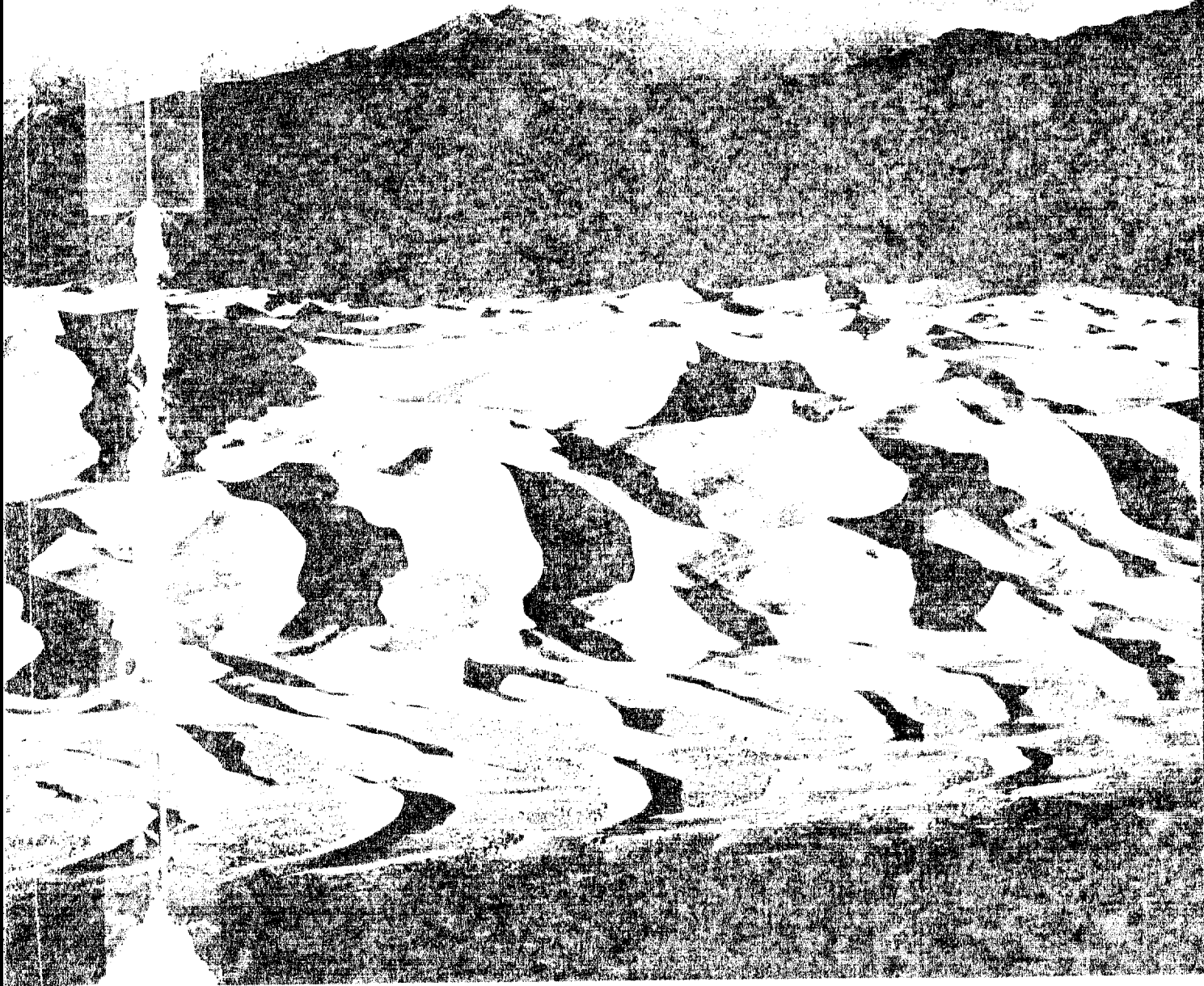
and built a retort to extract shale oil. The 650 million-dollar investment is partly offset by a contract with the government to provide oil for defense use. Union may learn much that will help make shale viable — someday.

THERE'S A CAFE in Maybell and a gas station where you can fill up. In far northwest Colorado these are amenities not to be lightly regarded. And

between Maybell and the Utah line, 62 miles on Highway 318, there's not much else.

I took that road to the northern end of Dinosaur National Monument and camped by the Green River. This is a few miles downriver from Browns Park, where Butch Cassidy and his gang sometimes hid when not robbing banks. Blessed with abundant grass, Browns Park also was a gathering place for Indians. In the late 1830s it held a

small fire
Park's
the shot
evidence
charcoal
that trap
"Fill's
offered.
clay of
coal. GI



At 70 square miles. Upon discovering the bones in 1850, explorer Zebulon M. Pike described them as having an appearance similar to the bones of a bear.

small fur trading post, Fort Davis, Colorado. Park ranger Glade Ross wondered where the short-lived fort stood and what other evidence beside the Green. He looked for charcoal, chunks of bone, and any signs that trappers traded to Indians in the area. "He show you where it was," Adams offered. Soon we were slipping into the clay on the riverbank, slipping out at the end. Glade reported the "bones" as

"Sometimes you can still find a bear," he said. Then, "I think I see one." A tiny bone of an animal was found in the gravel. Glade stepped out in shirt and, with an anguished look, slipped into the water. The small bone of the animal was in the gravel. "It held it went out in the dirt," he said. "That's Colorado for you." Adams said, "I don't know what it is, but it's a bear." U

Colorado Document

CPYRGHT