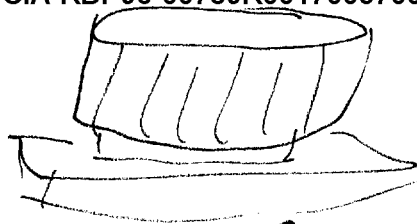


Faul
18 October 84
14:02



003
051

8° 35' S.
119° 52' E.



S-2
mounded

1402
1420
A. angle
solid
B. Structure of

Break

8° 35' S.
119° 52' E.



A. up arrow
down
solid
B. land c

S-2
red gr
Vertical structure
angular
scaly c
granular c
rough
fractured pe
dark brown pe
mottled c
green c
swills

A. dropping
solid
B. cliff face

Lyons

ADL Break
salt
water

7° 35' S.
119° 52' E.



A. winding fluid

B. water c

S. 2
muddy brown c
flowing off
vegetated c
rippled off
austro c

A. auro solid

B. land c
land water interface

AVL Breake
Colorado River
canyons

8° 35' S.
119° 52' E.



A. around solid

B. land c

A. flat splashy

B. water c

S. 2
green,
blue c
black/dark color pc
weathered
rising steeply c
flat topped off
crumbling off
brown pc
wide chattered sand off
white sand c
cool

flora swell pc
animal sounds c
Arched slope off

Algebraic
rounded c
Voluminous c
high pc
massive pc
with open c
expansive
aesthetic

AI Breaks
Very aesthetic
ganic
granular

S-2
reddish brown
vase sienne

ADL Breaks
Zion National
Park

Summary
land/water interface
stone/rock
facets
corbe where
vegetation
sandy

muddy brown
, vegetation along edge of water
Auster
blue

Sharp component
simple
abrasive
rounded
wind
open space
weathered
rough texture
animal sounds
dust, taste

ADL Break
Swamp

8° 35' S.

119° 52' E.



A. across

Squidly

B. Confusion Break
swamp + swamp

AOL Break

CS component

Swampy jungle / diff face
Amazon

8° 35' S.

119° 52' E.



S-2
9 run

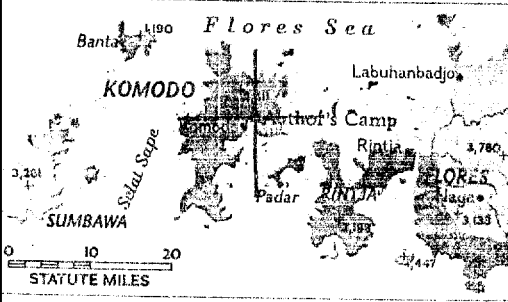
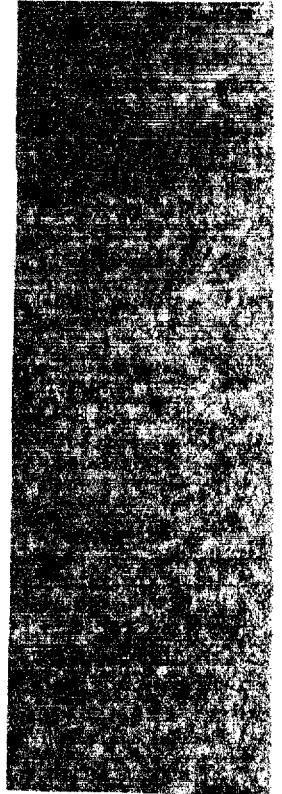
A. choppy
soft

B.
Confusion break

Lizards of Komoc



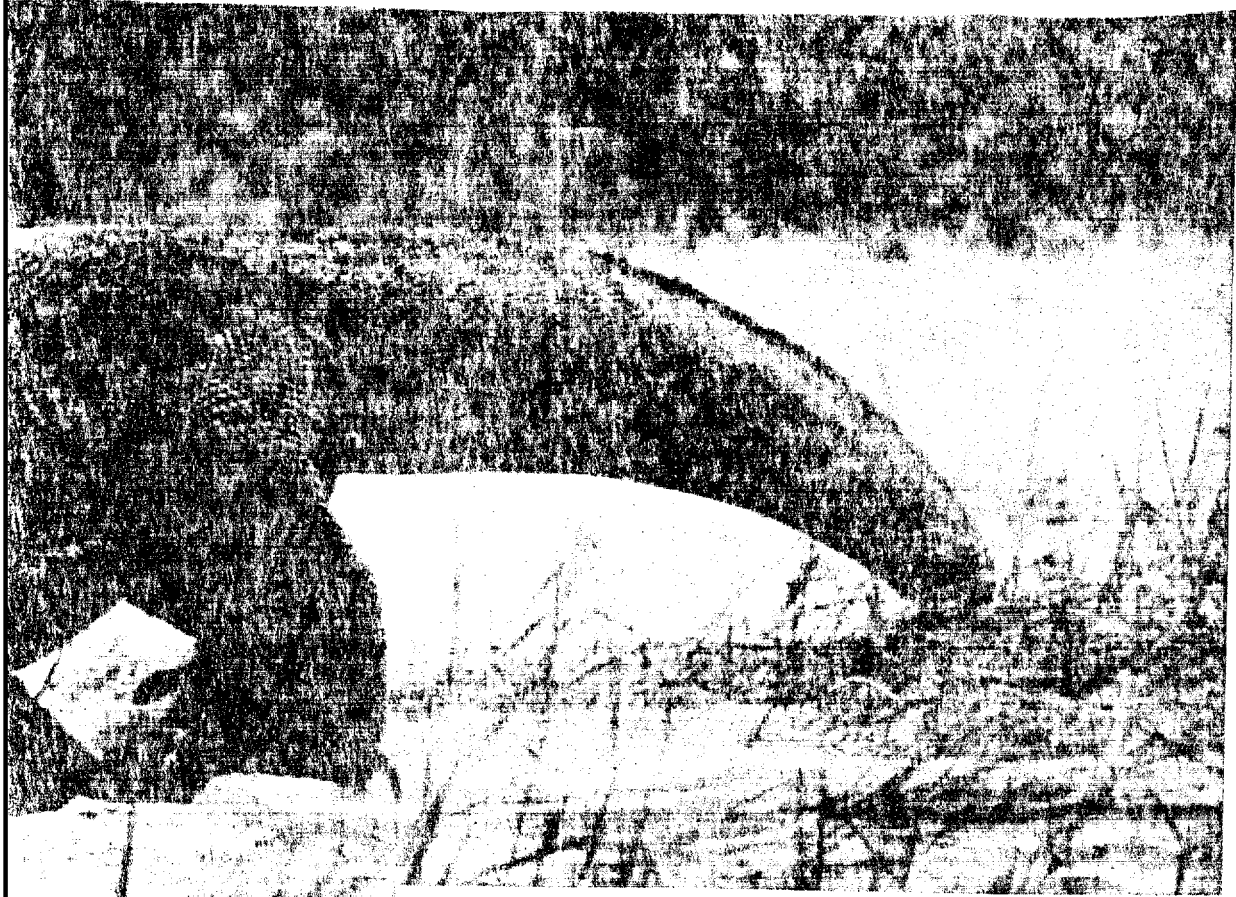
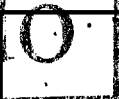
Gleam of gold on the hide of a newly hatched Komodo dims with maturity. "The 21½-inch baby weighed next to nothing," said the author. It coiled inside a shell the size of a goose egg.



Realm of the dragons: Green tone shows the giant lizards' tiny kingdom.



Their agility belying their bulk, two Komodos can easily advance on the trail. Like crocodiles and alligators, they never slither across dry land but always rise up on their legs to move. Wrinkled



fold of skin on their flanks will stretch smooth after a full meal. When angered, the reptiles puff out their necks. Speckles of bony calcium make the scaly hide valueless for handbags and shoes.

CPYRGHT

CPYRGHT



KODACHROME © NATIONAL GEOGRAPHIC SOCIETY

876). About a thousand of the lizards—largest in the world—survive on four tropical islands: Komodo, Rintja, Padar, and the southwestern corner of Flores. Hoping to save *Varanus komodoensis* from extinction, the Indonesian Government has proclaimed part of Rintja a dragon sanctuary and has restricted export of the giants.