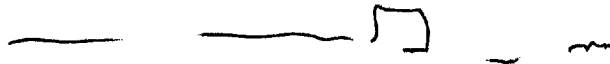


260487  
FF made, used  
Gene  
1112

236601

96 8989



A. across flat  
bar

B. land

A - up row  
right  
down

Solid

B. starts

A. most  
up  
and  
Solid

B. starts

32

grey

red

green

blue

hard

soft

black

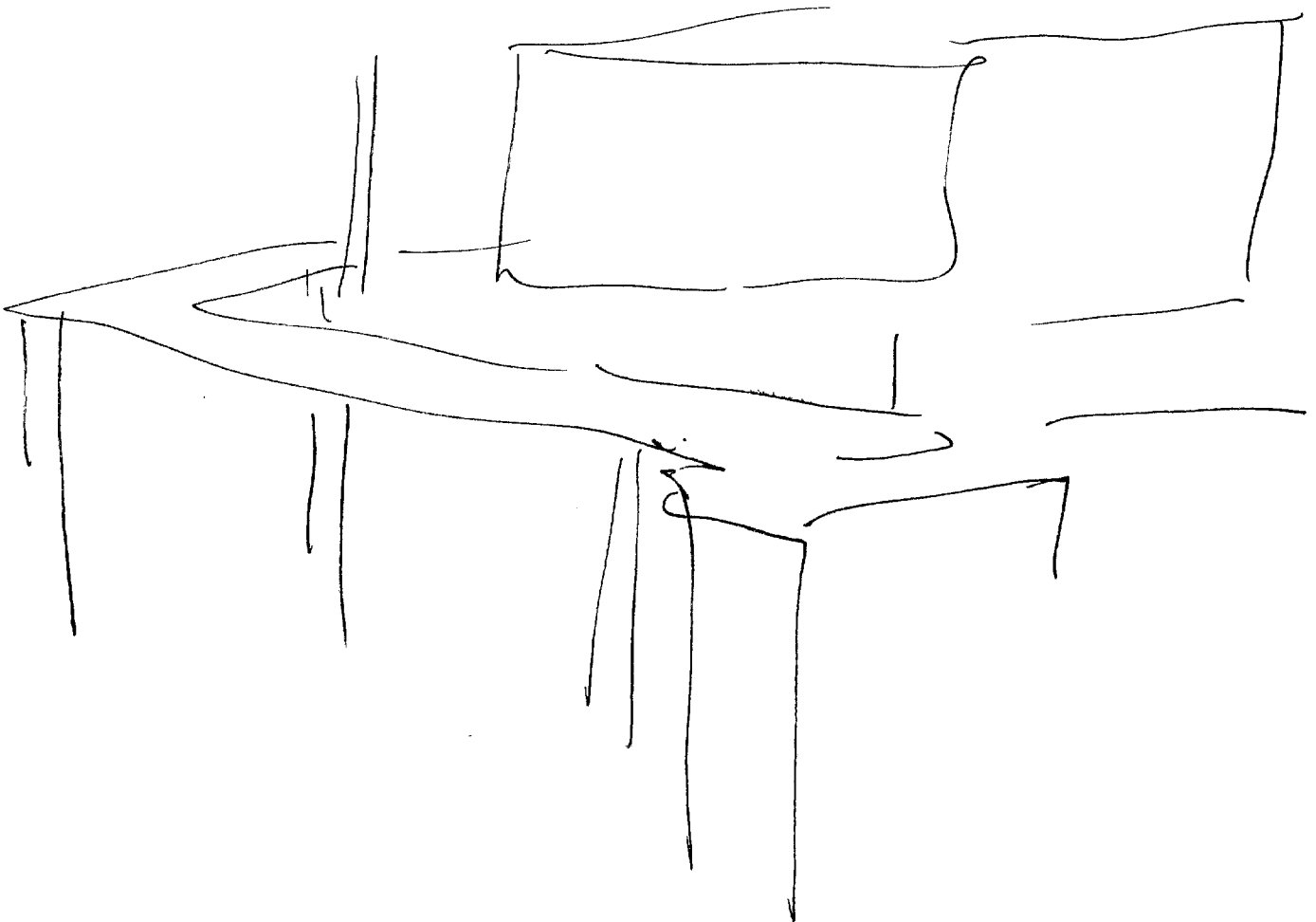
cool

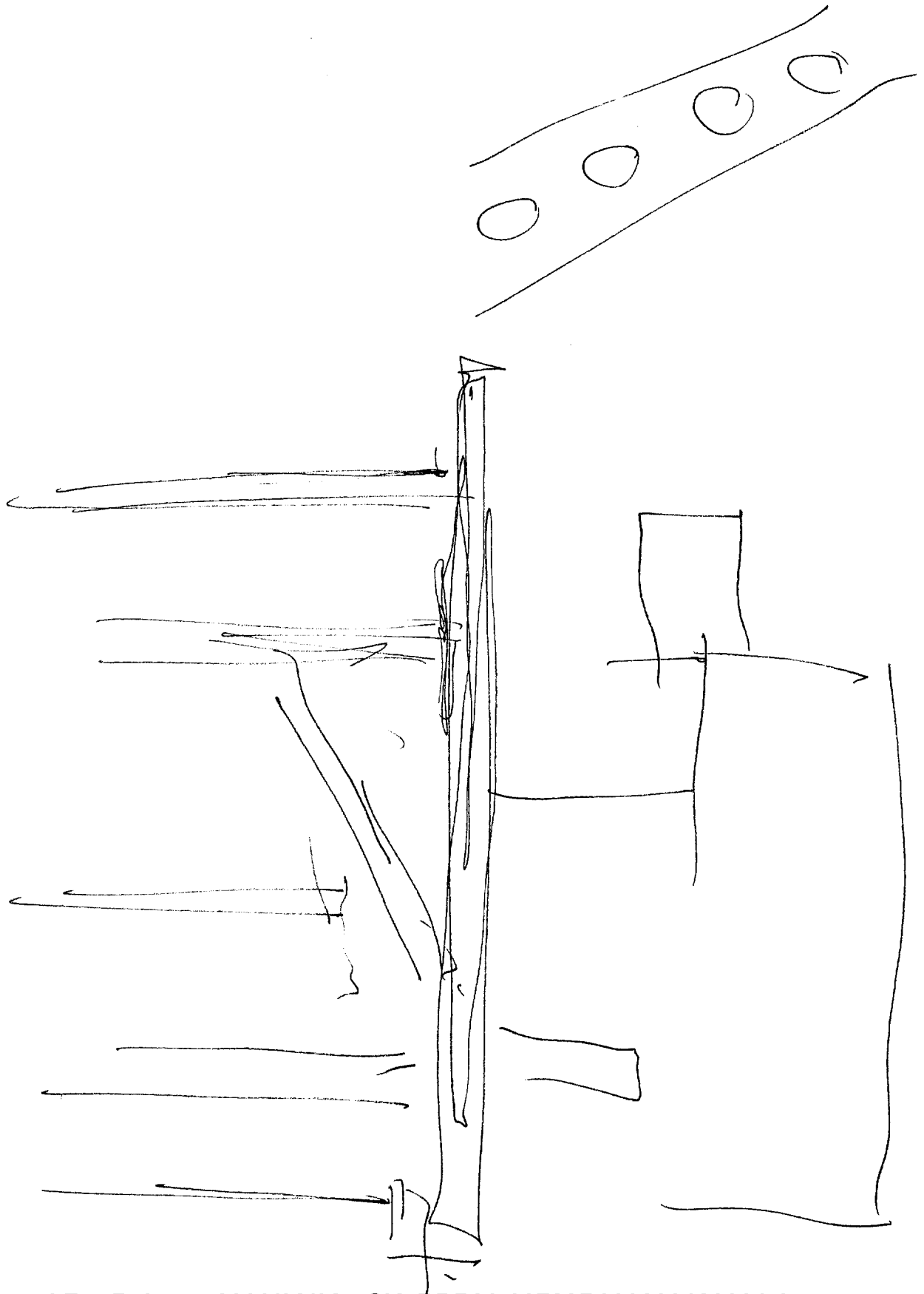
smooth

rough

dry

red  
long  
high  
wide  
deep  
long  
A7 BK  
chills  
Duanhelundz





52

4  
ALS

metal

grey  
cold

high  
wide  
airy  
solid  
angled  
slipping  
vibrant

hard

longing  
noises

white  
windy

rounded  
cylindrical  
thin  
long  
dished  
complex

structure

→ 2

wild  
open

green  
black  
grey  
dim

cloudy  
rocky  
vegetation  
structure

many  
peaks

hill

valley  
up

water

winding

black

surface

surface



52

AZ  
+2 BK  
Imez

EI

T

I

AOL

ALS

grey

Structure

metallic

technical

tall  
large

framework

metal screws

metal parts

ground

beams

girders

sheathing

"like"  
walkways

Als/5-4 impression of construction site, as if structure is not yet finished, but is being used partially enclosed areas "like" rooms & floors; but other areas still open to elements "like" framework & awaiting further work.



SU2

7  
ALS

S2

gray  
white

large

official  
papers

people

stressful

work by

concentrate

S4 1/2 involves paperwork; analytic abilities; knowledge of  
certain facts.

overlooked

S4 1/2 urban area or large number of varied-use structures in  
reasonably immediate vicinity.

level

floors

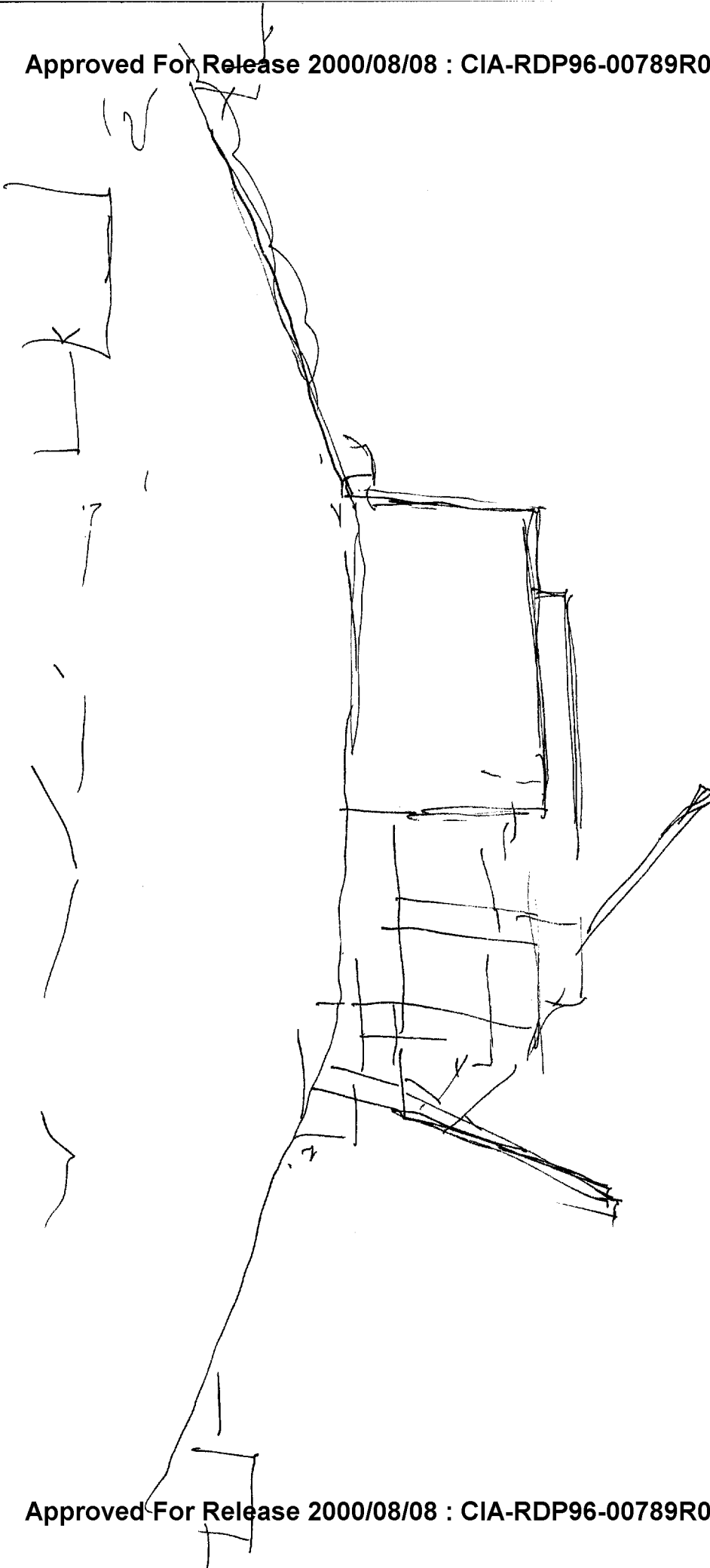
rectangular

large

new

brownish  
reddish  
gray

7a



SVI

S2

ALS

for the  
sov embassy  
in D.C.

interim Summary

Impression of large rectangular structure w/ several floors which is only partially complete. Construction/fabrication/assembly continues on remaining unfinished portion. Structure seems to be "erected up" or erected on something "like" a hill or other elevated "platform".

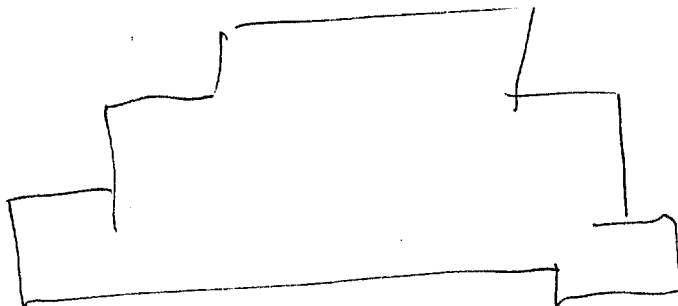
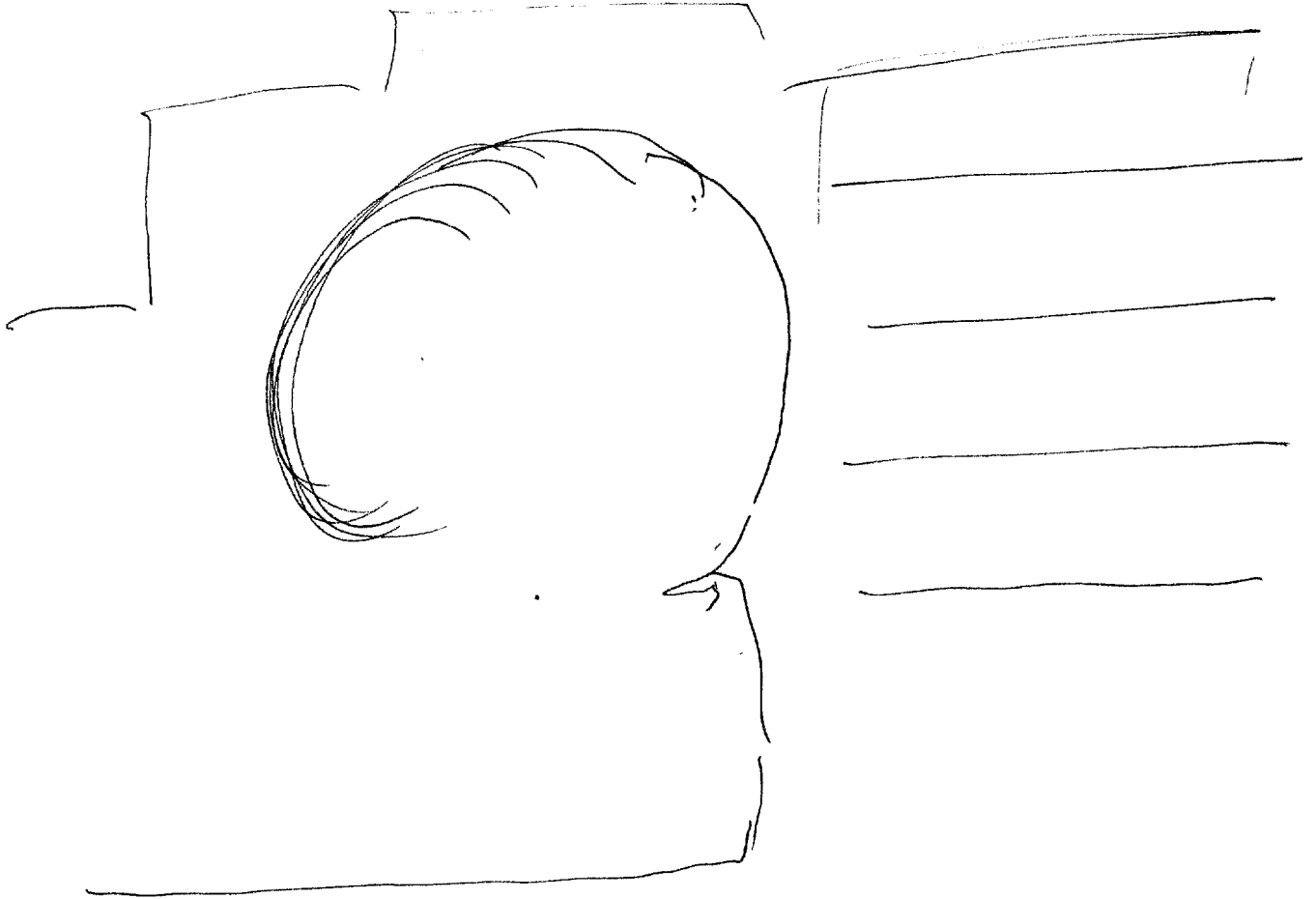
- rounded
- curved
- sloping
- solid

white  
black

S4/2) Hs seems lower in elevation.

Structure

- yellow
- hollow
- long
- low
- spacious



SU 2

9  
HLS

52

rounded  
cylindrical  
shape



angled  
flat areas  
around

plastic  
unit

5 1/2 This structure doesn't seem to be a  
conventional shape or design.

inside (c)

white  
gasket  
well-lighted

compartments  
rooms

objects  
equipment

5 1/2 impression of padding

bed

cylindrical  
...add

object



SUI

Doc MS

52

D

A1

E2

T

I

Object

dark grey

boxen

hard

metal  
glass  
derivative

apparatus

electron

connected

connected

specialized  
complex

complex

in place

secured

conductivity  
table

measuring  
controller  
communication  
adjustable  
variable

Sub

acts & is acted upon Integral to a system.

SUI

11  
ALS

S2

lighted

S4 1/2 has "like" details to provide status of equipment + level of functioning. People routinely examine the information provided + adjust as necessary.

Compartment A

"like" climate control

S4 1/2 mostly open space; big wt; lit wt colored walls, ceiling, floor. Sense of softness to surfaces. "like" paddles;

Compartment B + B1

Subdivided

dark color dark grey

complicated

S4 1/2 many small details or objects.

Compartment C

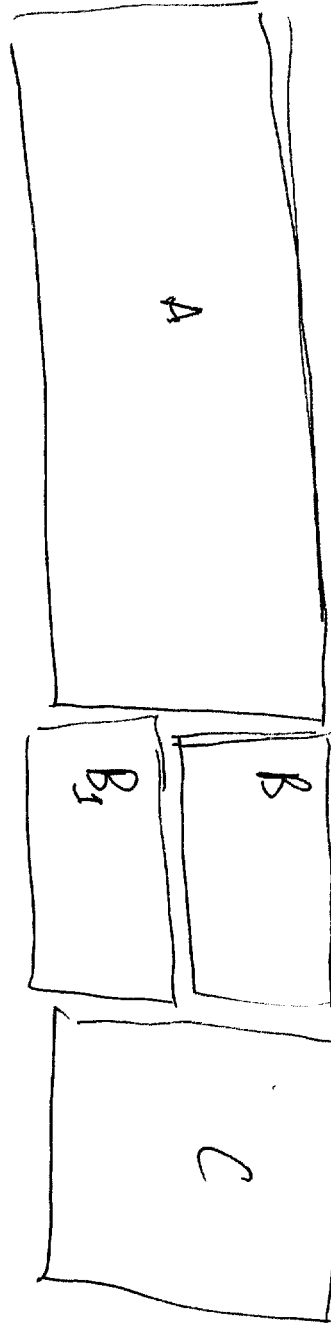
Spacious

Seats windows

roundedness

lighted

112



52

SUZ

PI

EI

I

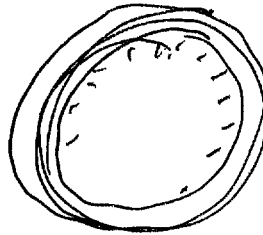
AL

ALB

SUZ/ALB - impression of conveyance, or something to do with a conveyance.

round flat

object



glass

metal gauge

Component B.

5/12. People spend less time here. Object/equipment present tends to be able to "mend itself". Provides various functions + services dealing with rest of "structure".

Component (c)

rounded lens

metal

lens

Component (d)

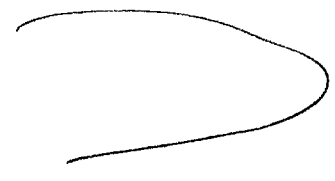
SUJ

B  
ALS

52

white  
shiny

aluminum  
windows  
↳ controls  
service  
seats



54/2

configuration reminds me of some sort of  
conveyance - layout - first open, voluminous area;  
next area with equipment first by semi-automat-  
ically ~~control~~ (this area is congested & filled with  
equipment that is secured to surfaces, "like" floor, & walls  
finally another spacious area w/ windows, seats, &  
equipment - readouts, dials, gauges, etc., but not  
intend be in general space or area.

1154