

Paul
2 May 88
Ft. Meade, MD
Solo/9461
1049

SVI

S2

D

A2

E1

T

I

ADL

Als

Structure
smoke

metal
wood
piece
splinters

flames
fire

A2 B4
a little
smoky
or ~~smoky~~ disturbing

ADL/B4
Reminds me
of Pearl Harbor

B: (low by
smoke
flame

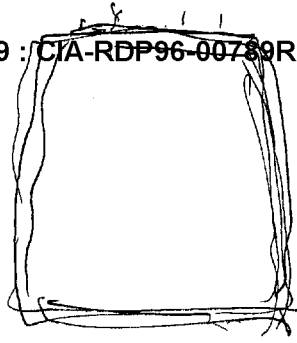
A I B E
Chills

S4/2 Attack involves the air

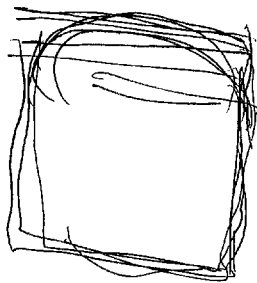
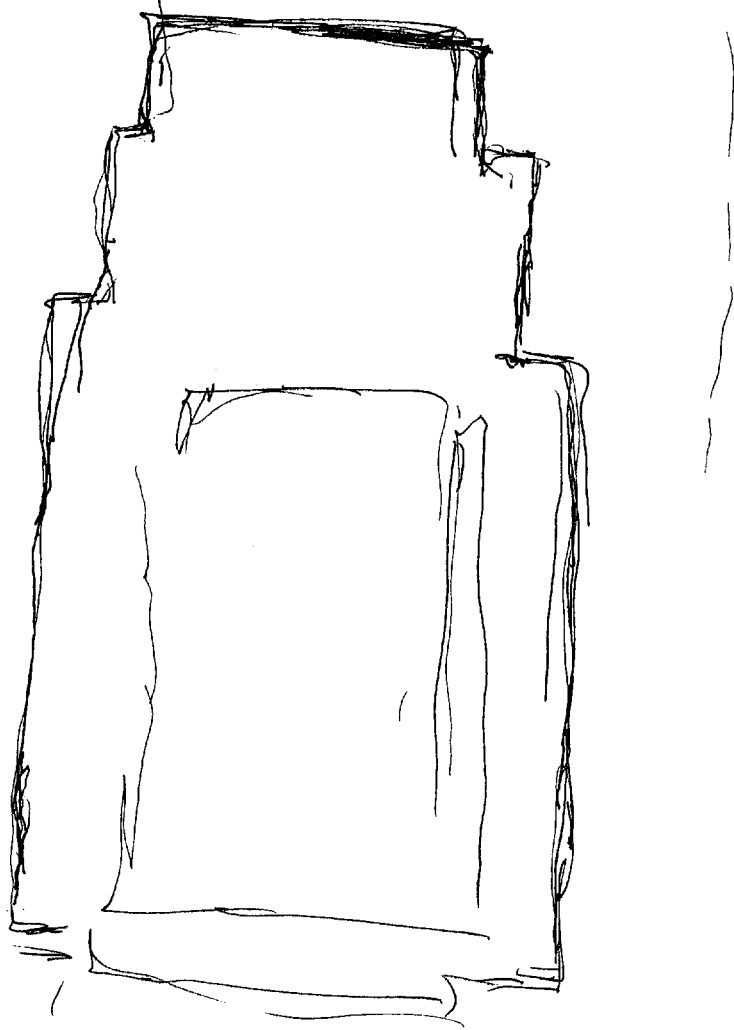


Disi Karta
point
→





1



52

D

AI

EI

T

I

AOL

AG

Self Structure is dark neutral color, complex - with tall parts, corners, planes, frameworks, steps

AOL BK
Ship

Self Structure viewed from top after incident reveals billowing dark smoke, licking flames, twisted distorted structural components, debris, very large jagged gap in roof, people outside, disoriented, disoriented, others moving towards for damage control/recovery/rescue.

AOL/D
Pearl
Harbor

1112